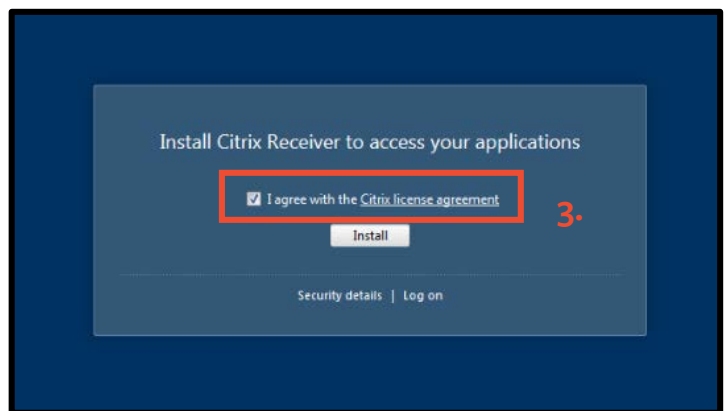


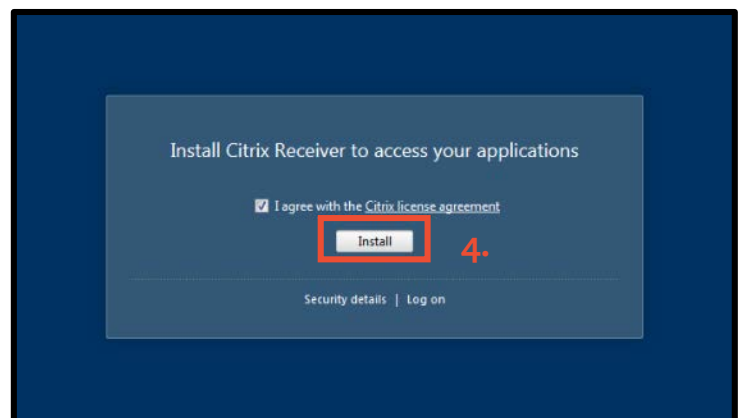
Installing Citrix Receiver on a Macintosh Computer

In order to access campus applications through Citrix, the Citrix Receiver must be installed. Computers managed by the SIS Project should have the Citrix Receiver already installed. However, instructions are provided below for computers that do not have the receiver installed already.

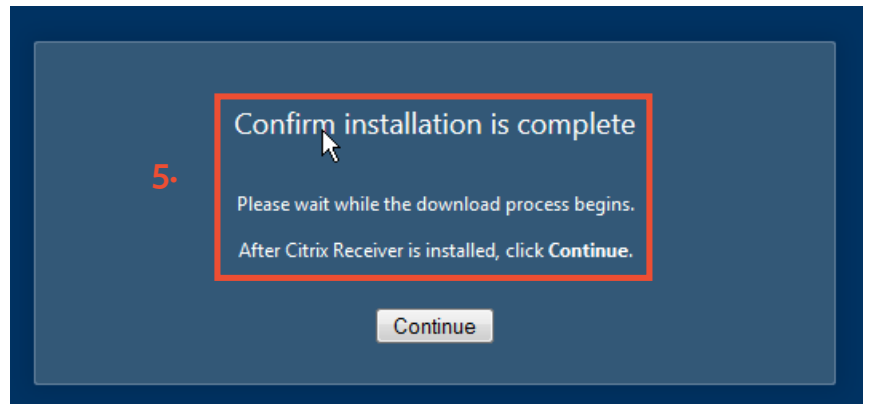
1. Navigate to: <http://citrix.berkeley.edu>
2. Log in (Use your CalNet ID and passphrase.)
3. Check the “**I agree with Citrix License Agreement**” box.



4. Click the **Install** button.

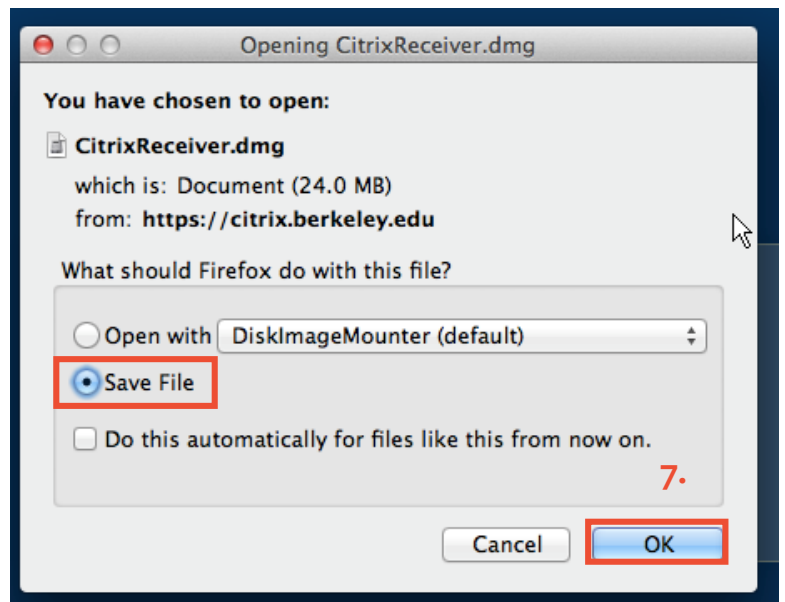


5. You will next see a “**Confirm Installation is Complete**” window. DO NOT click the Continue button at this time.



6. You will be prompted to save the **CitrixReceiver.dmg** file. Click **Save File**.

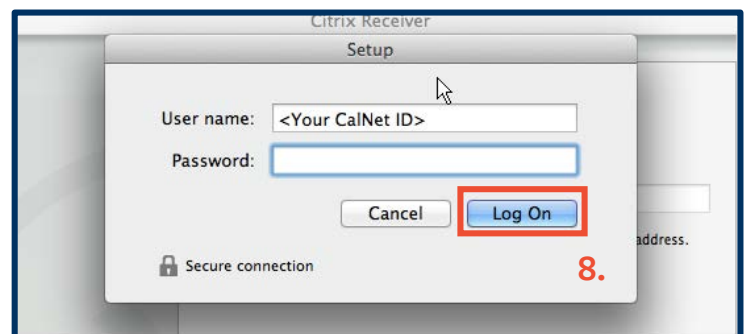
6.



7. Click **OK**.

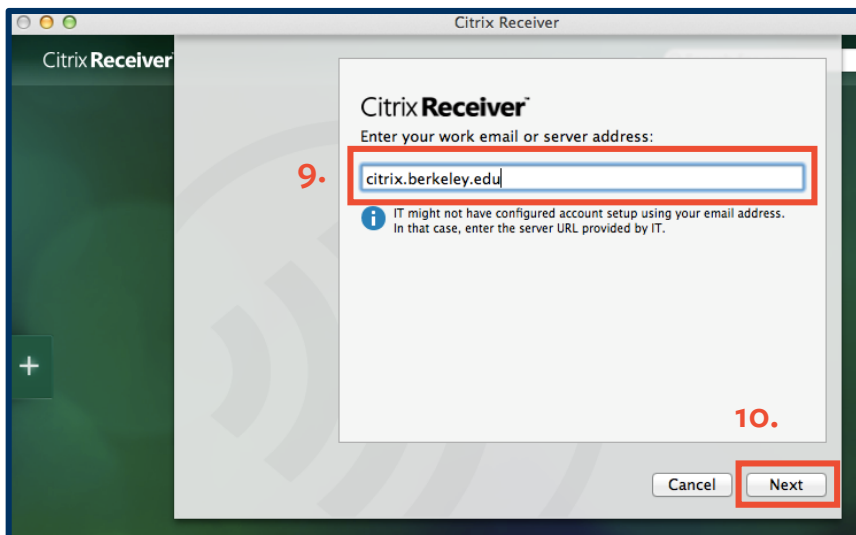
8. Open the downloaded Citrix Receiver file, where you will be prompted for your **User name** and **Password**.

Enter your CalNet ID and passphrase.

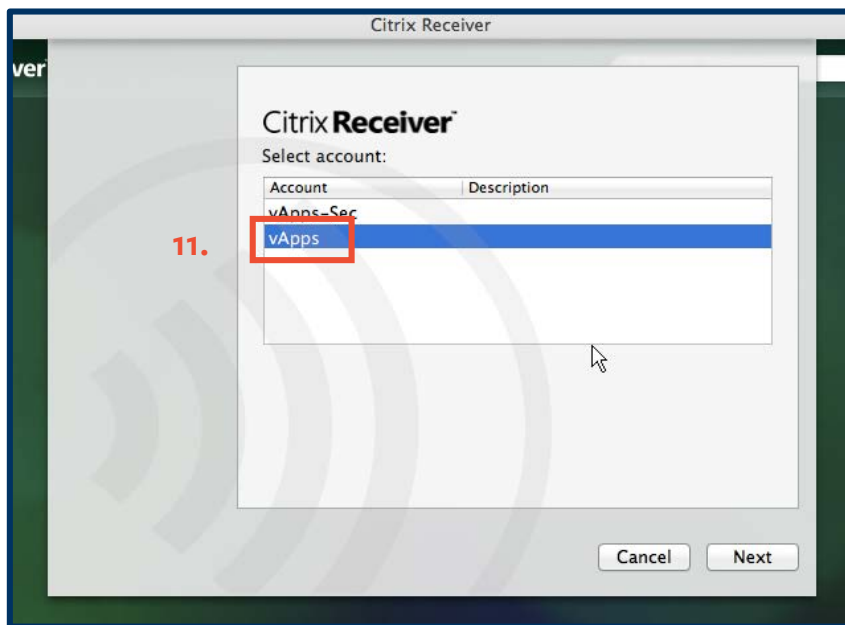


9. The CitrixReceiver will ask you to enter your **work email or server address**. Please enter "**citrix.berkeley.edu**"

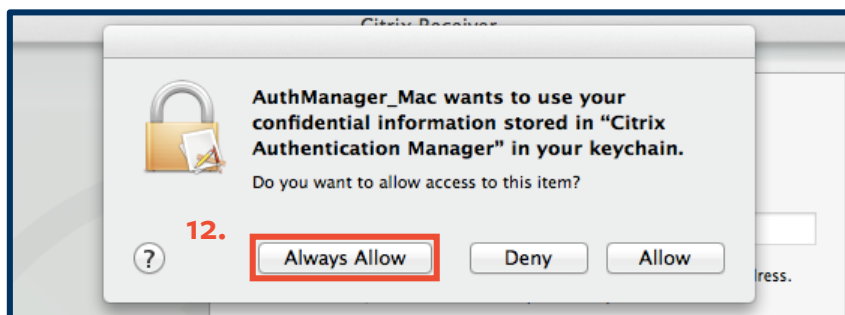
10. Click **Next**.



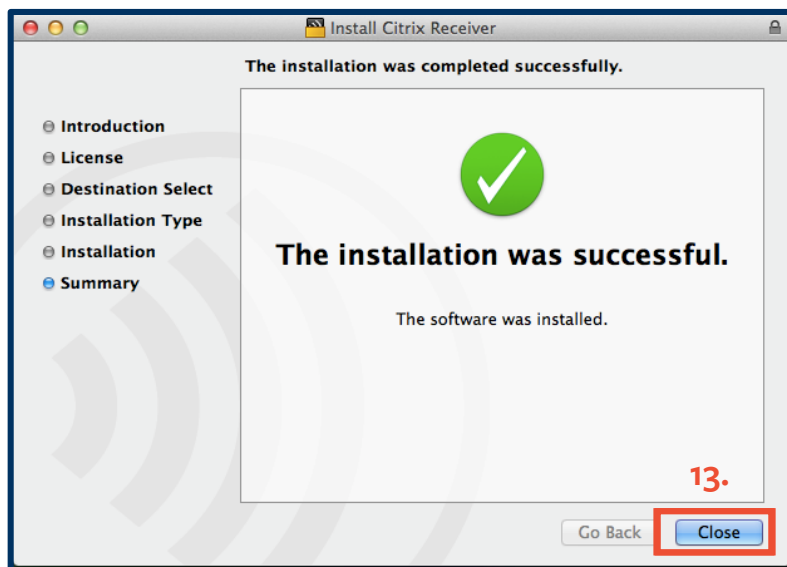
11. You may be asked to select your account. Select **vApps**, and then click **Next**.



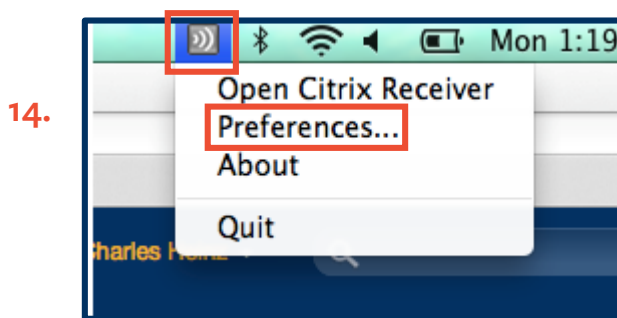
12. You may be prompted to allow Citrix to store confidential information in your keychain. Click **Always Allow**.



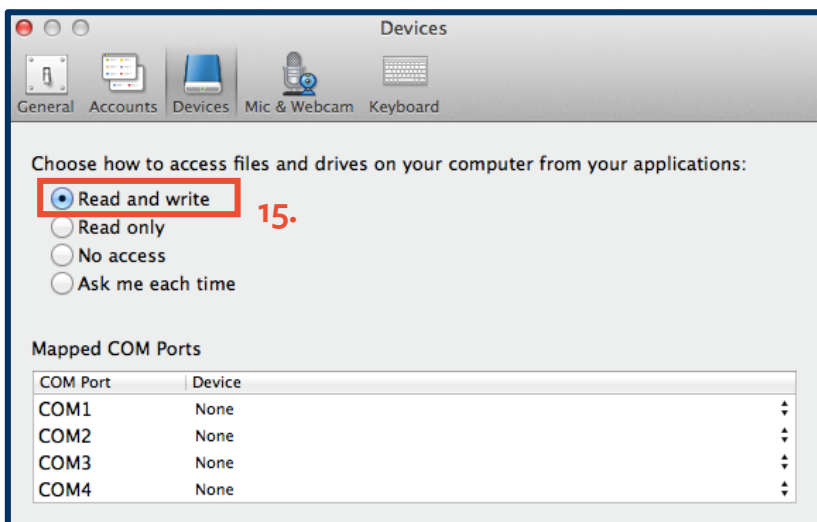
13. Installation will complete. Click **Close** to continue.



14. Click on the **Citrix Receiver icon** at the top of your screen. Then click **Preferences**.

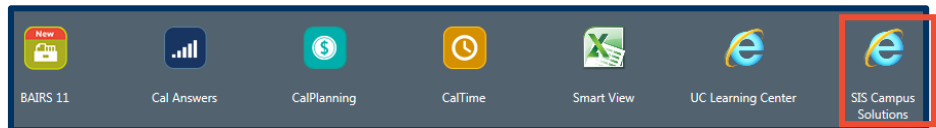


15. Click on the **Devices** tab, and select **Read and write** from the list of options.



16. You can now access the project environment by visiting <http://citrix.berkeley.edu> and logging in.

17. Your browser's web page should change to a list of available applications. Click **SIS Campus Solutions**.



17.

NOTE: It may take up to 45 seconds to launch the application the first time you use it.