

Installing Citrix Receiver on a Windows Computer

In order to access campus applications through Citrix, the Citrix Receiver must be installed. Computers managed by the SIS Project should have the Citrix Receiver already installed. However, instructions are provided below for computers that do not have the receiver installed already.

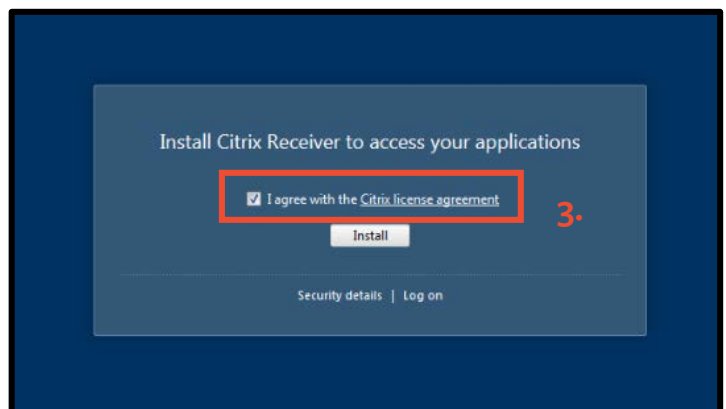
1. Navigate to:

<http://citrix.berkeley.edu>

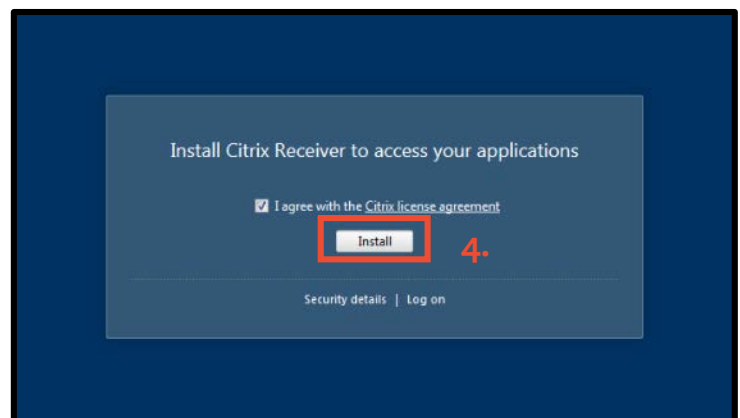
2. Log in

(Use your CalNet ID and passphrase.)

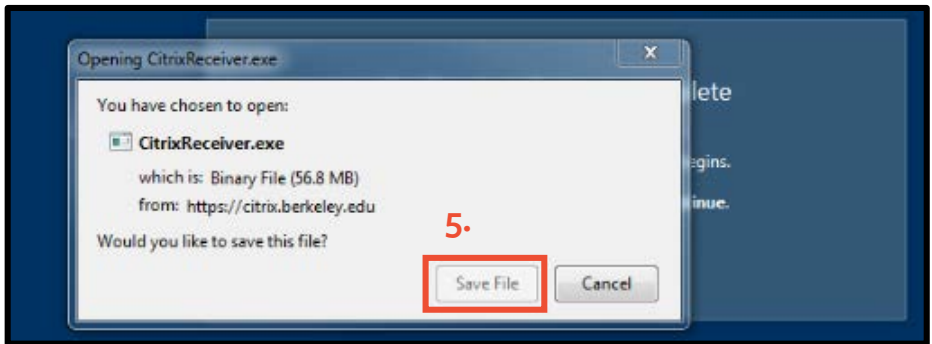
3. Check the “**I agree with Citrix License Agreement**” box.



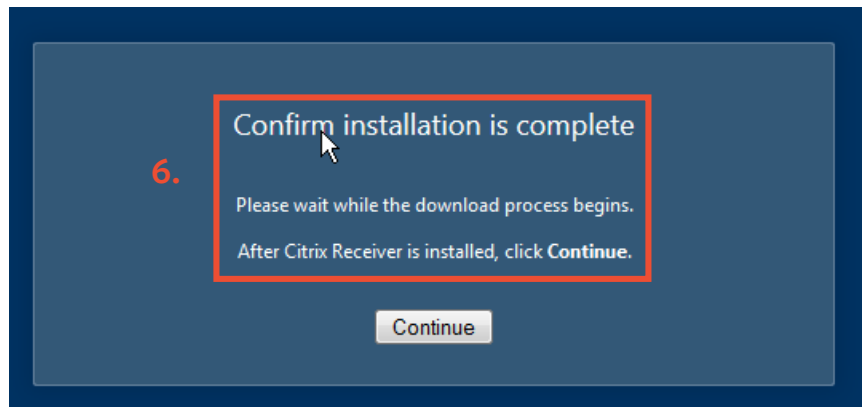
4. Click the **Install** button.



5. Save the **CitrixReceiver.exe** file.



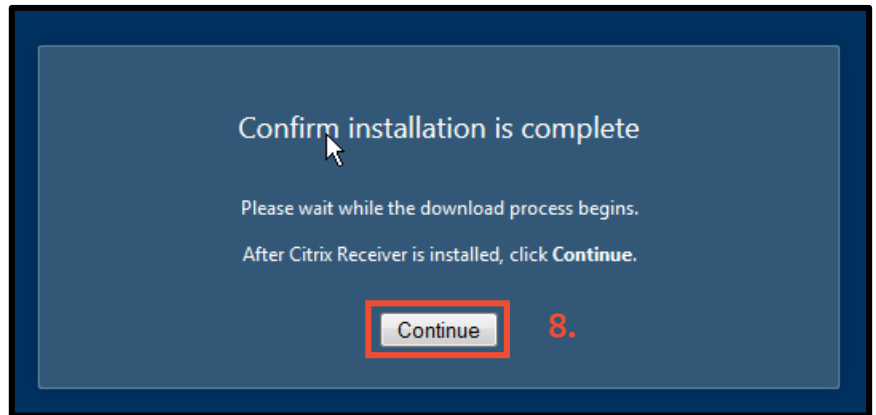
6. You will next see a “**Confirm Installation is Complete**” window. DO NOT click the Continue button at this time.



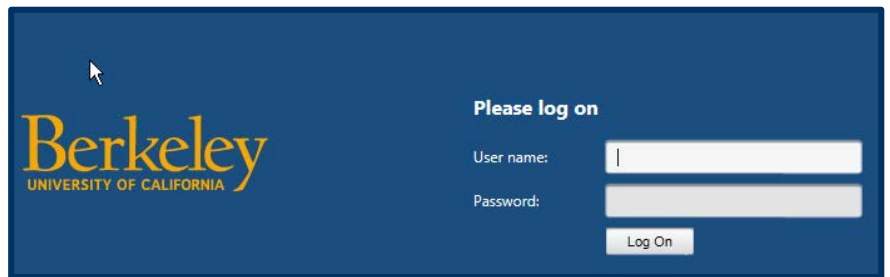
7. Click the **Install** button. (The installation process will proceed without any other action required.)



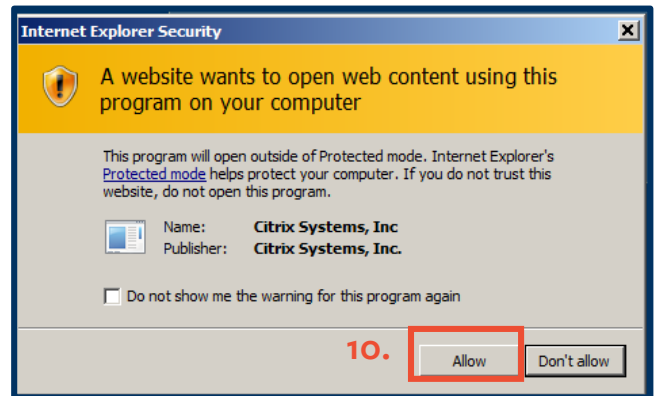
- 8. Click the **Continue** button.



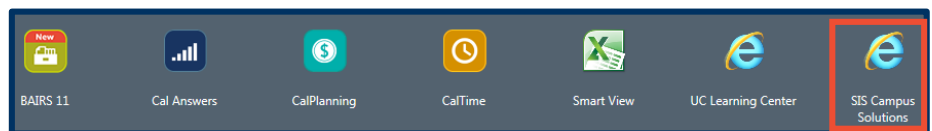
- 9. You can now access the project environment by visiting <http://citrix.berkeley.edu> and logging in.



- 10. You may get a warning message about allowing Citrix Receiver access. Click **Allow**.



- 11. Your browser's web page should change to a list of available applications. Click **SIS Campus Solutions**.



11.